

# DIN UNION FITTINGS



Jui Ming Metal Industrial Co., Ltd.

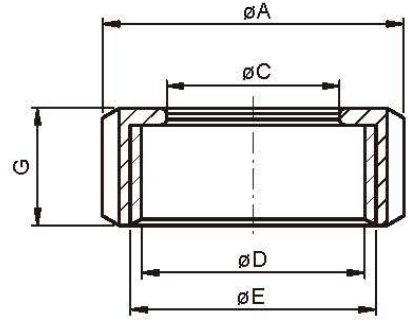


1. Standards: DIN 11851
2. Applications: For Food Industry
3. Working Pressures: DN10-DN40 40Bar , DN50-DN100 25Bar
4. Materials:
  - Round slotted Nut-----TP-304
  - Expanding Liner-----TP-304, 316, 316L
  - Expanding Male part-----TP-304, 316, 316L
  - Welding Liner-----TP-304, 316, 316L
  - Welding Male part-----TP-304, 316, 316L
  - Blank Nut-----TP-304, 316, 316L
  - Blank Liner-----TP-304, 316, 316L
  - Seal----EPDM, Silicone, Buna-N, Viton.
5. Surface Finished: Ra Max 0.8um.
6. Size range: Imperial 1"-----4"  
Metric DN10---DN150



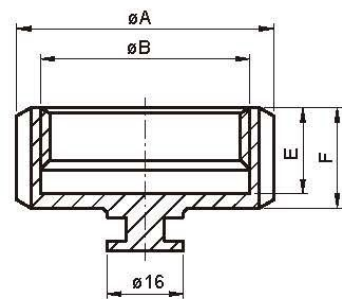
# DIN UNION FITTINGS

**DIN-13R 圓螺帽**  
DIN ROUND SLOTTED NUT



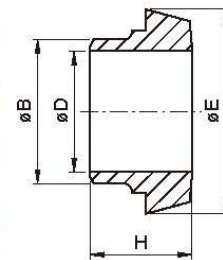
DIN	A	C	D	E	G	SLOT
10	38	19	25.2	RD 28*1/8	18	4
15	44	25	31.2	RD 34*1/8	18	4
20	54	31	40.3	RD 44*1/6	21	4
25	63	36	48.3	RD 52*1/6	21	4
32	70	42	54.3	RD 58*1/6	21	4
40	78	49	61.3	RD 65*1/6	21	4
50	92	62	74.3	RD 78*1/6	22	4
65	112	80	91.3	RD 95*1/6	25	4 6
80	127	94	105	RD110*1/4	30	4 6
90	138	104	115	RD120*1/4	30	4 6
100	148	115	125	RD130*1/4	31	4 6
125	178	138	155	RD160*1/4	35	4 6
150	210	164	185	RD190*1/4	40	4 6

**DIN-13AH 盲螺帽**  
DIN BLANK NUT



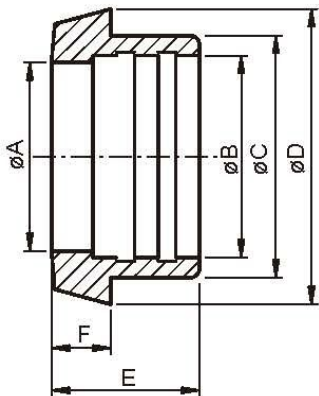
DIN	A	B	E	F	SLOT
10	38	RD 28*1/8	15	18	4
15	44	RD 34*1/8	15	18	4
20	54	RD 44*1/6	18	21	4
25	63	RD 52*1/6	18	21	4
32	70	RD 58*1/6	18	21	4
40	78	RD 65*1/6	18	21	4
50	92	RD 78*1/6	19	22	4
65	112	RD 95*1/6	21	25	4 6
80	127	RD110*1/4	26	30	4 6
90	138	RD120*1/4	26	30	4 6
100	148	RD130*1/4	26	31	4 6
125	178	RD160*1/4	30	35	4 6
150	210	RD190*1/4	34	40	4 6

**DIN-14 無牙接頭**  
DIN WELD LINER



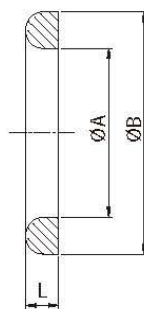
DN	B	D	E	H
10	15	10	22	17
15	21	16	28	17
20	25	20	36	18
25	31	26	44	22
32	37	32	50	25
40	43	38	56	26
50	55	50	68	28
65	72	66	86	32
80	87	81	100	37
90	95	89	111	35
100	106	100	120	44
125	132	125	149	34
150	157	150	175	37

**DIN-14R 擴管平接頭**  
DIN EXPANDING LINER



DIN	A	B	C	D	E	F
10	10	12.2	18	22	17	6
15	16	18.2	24	28	17	6
20	20	22.2	30	36	18	8
25	26	28.2	35	44	22	10
32	32	34.2	41	50	25	10
40	38	40.2	48	56	26	10
50	50	52.2	61	68	28	11
65	66	70.3	79	86	32	12
80	81	85.3	93	100	37	12
100	100	104.3	114	120	44	15
125	125	129.3	137	149	34	17
150	150	154.3	163	175	37	18

**DIN 墊片**  
DIN SEAL RING

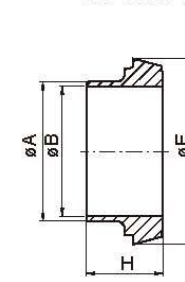


SIZE	ØA	ØB	L
10	12	20	4.5
15	18	26	4.5
20	23	33	4.5
25	30	40	5
32	36	46	5
40	42	52	5
50	54	64	5
65	71	81	5
80	85	95	5
100	104	114	5
125	130	142	7
150	155	167	7

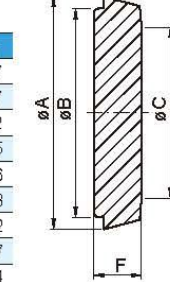
# DIN UNION FITTINGS



**DIN-14EB 英制無牙接頭**  
DIN IMPERIAL WELD LINER

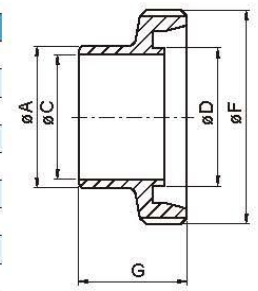


SIZE	A	B	E	H
1/2"	12.7	9.4	22	17
3/4"	19.05	15.8	28	17
1"	25.4	22.2	44	22
1 1/4"	31.8	28.5	50	25
1 1/2"	38.1	34.9	56	26
2"	50.8	47.6	68	28
2 1/2"	63.5	60.3	86	32
3"	76.2	73.0	100	37
4"	101.6	97.6	121	44
5"	127.0	123.0	150	34
6"	152.4	148.4	176	37



**DIN-14AH 盲板**  
DIN BLANK LINER

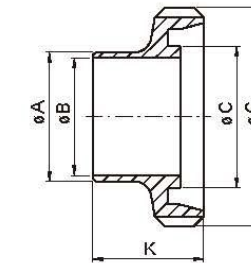
DIN	A	B	C	F
10	22	18	11	9
15	28	24	17	9
20	36	30	21	11
25	44	35	27	13
32	50	41	33	13
40	56	48	39	13
50	68	61	51	14
65	86	79	67	16
80	100	93	82	16
100	120	114	101	20
125	149	137	126	22
150	175	163	151	24



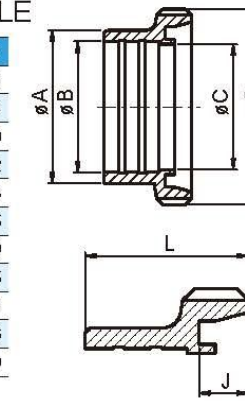
**DIN-15 有牙接頭**  
DIN WELD MALE

SIZE	A	C	D	F	G
10	15	10	12	RD28*1/8	21
15	21	16	18	RD34*1/8	21
20	25	20	23	RD44*1/6	24
25	31	26	30	RD52*1/6	29
32	37	32	36	RD58*1/6	32
40	43	38	42	RD65*1/6	33
50	55	50	54	RD78*1/6	35
65	72	66	71	RD95*1/6	40
80	87	81	85	RD110*1/4	45
90	95	89	94	RD120*1/4	45
100	106	100	104	RD130*1/4	54
125	132	125	130	RD160*1/4	46
150	157	150	155	RD190*1/4	50

**DIN-15EB 英制有牙接頭**  
DIN IMPERIAL WELD MALE



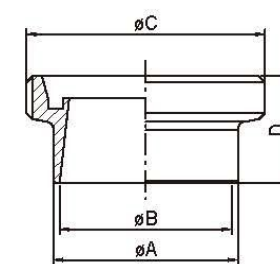
SIZE	A	B	C	G	K
1/2"	12.7	9.4	12.0	RD28*1/8	14
3/4"	19.05	15.8	18.0	RD34*1/8	14
1"	25.4	22.2	30	RD51.9*1/6	29
1 1/4"	31.8	28.5	36	RD57.9*1/6	32
1 1/2"	38.1	34.9	42	RD64.9*1/6	33
2"	50.8	47.6	54	RD77.9*1/6	35
2 1/2"	63.5	60.3	71	RD94.9*1/6	40
3"	76.2	73.0	86	RD109.9*1/4	45
4"	101.6	97.6	105	RD129.9*1/4	54
5"	127.0	123.0	130	RD159.9*1/4	46
6"	152.4	148.4	155	RD189.9*1/4	50



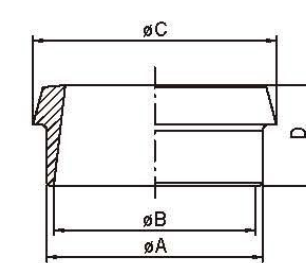
**DIN-15R 擴管有牙接頭**  
DIN EXPANDING MALE

DIN	A	B	C	G	J	L
10	18	12.2	10	27.5 RD28*1/8	7	21
15	24	18.2	16	33.5 RD34*1/8	7	21
20	30	22.2	20	43.3 RD44*1/6	9	24
25	35	28.2	26	51.3 RD52*1/6	10.5	29
32	41	34.2	32	57.3 RD58*1/6	10.5	32
40	48	40.2	38	64.3 RD65*1/6	10.5	33
50	61	52.2	50	77.3 RD78*1/6	10.5	35
65	79	70.3	66	94.3 RD95*1/6	11.5	40
80	93	85.3	81	109 RD110*1/4	11.5	45
100	114	104.3	100	129 RD130*1/4	13.5	54
125	137	129.3	125	159 RD160*1/4	16.5	46
150	163	154.3	150	189 RD190*1/4	17.5	50

**DIN/ISO MALE**  
ISO-15 內斜有牙接頭



DN	A	B	C	D
10	18	14	RD28*1/8	21
15	21.3	18.1	RD34*1/8	21
20	26.9	23.7	RD44*1/6	24
25	33.7	29.7	RD52*1/6	29
32	42.4	38.4	RD58*1/6	32
40	48.3	44.3	RD65*1/6	33
50	60.3	56.3	RD78*1/6	35
65	76.1	71.6	RD95*1/6	40
80	88.9	84.3	RD110*1/4	45
100	114.3	109.1	RD130*1/4	54



**DIN/ISO LINER**  
ISO-14 內斜無牙接頭

DN	A	B	C	D
10	18	14	22.5	17
15	21.3	18.1	28.5	17
20	26.9	23.7	36.5	18
25	33.7	29.7	44	22
32	42.4	38.4	50	25
40	48.3	44.3	56	26
50	60.3	56.3	68.5	28
65	76.1	71.6	86	32
80	88.9	84.3	100	37
100	114.3	109.1	121	44